

California Student Aid Commission
Symposium on Student Debt in California

Charts and tables¹

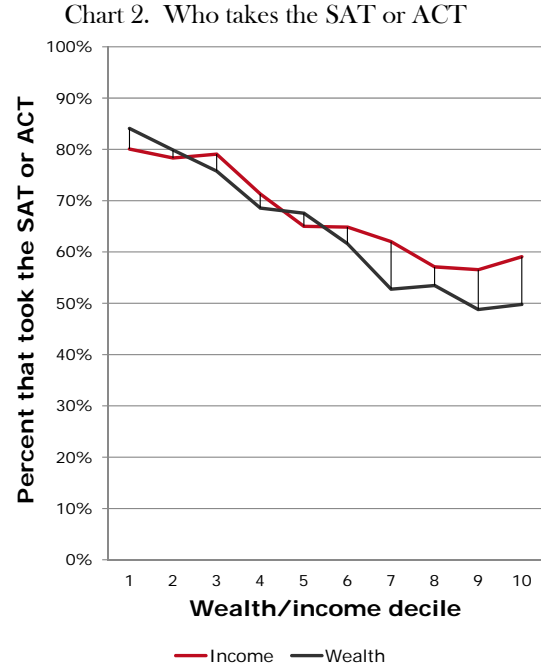
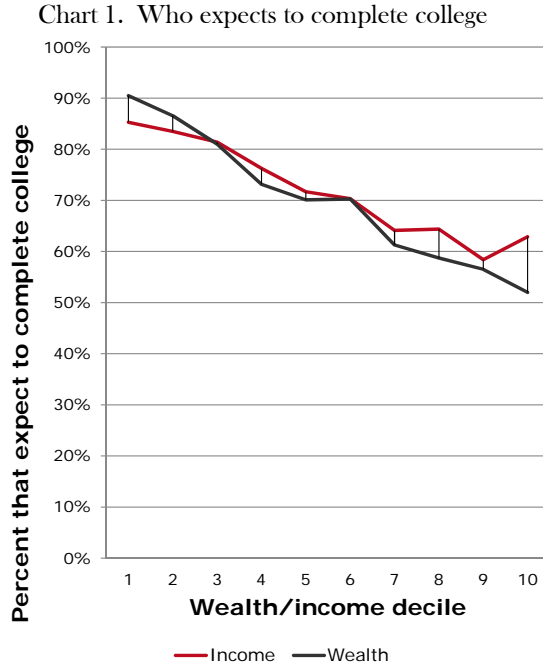
Income and wealth deciles

Each decile represents 10% of the sample. For example, Decile 1 represents the top 10% of the income/wealth distribution, and Decile 10 represents the bottom 10% of the income/wealth distribution.

Table 1. Minimum, median, and maximum for income and wealth deciles

Decile	Income (\$000)			Wealth (\$000)		
	Min	Median	Max	Min	Median	Max
1	\$121.54	\$160.50	\$425.59	\$322.50	\$493.88	\$2740.82
2	91.54	105.20	121.50	182.75	236.40	322.00
3	76.20	82.50	91.50	119.20	144.50	182.50
4	60.01	69.00	76.16	79.00	96.90	119.00
5	46.50	55.00	60.00	51.70	63.75	78.85
6	37.50	41.50	46.30	29.70	40.30	51.50
7	24.30	31.20	37.50	16.40	22.21	29.50
8	15.01	19.50	24.25	6.10	9.80	16.35
9	5.01	9.51	15.00	1.49	3.55	6.00
10	0.00	2.00	5.00	-935.25	-1.50	1.45

Differences in college-going outcomes by income and wealth decile



¹ For all data cited: source is Jez calculations from the National Longitudinal Study of Youth (1997); N=8984. Selective colleges are approximately the same as those rated as most and highly selective on the Barron's selectivity index. Estimates of sample composition were made using an NLSY:97 custom weight, which adjusts sampling design and the use of data from more than one round of surveying. Multiple imputation was used to adjust for missing data. Robust standard errors, adjusted for clustering, are used.

Chart 3. Who applies to college

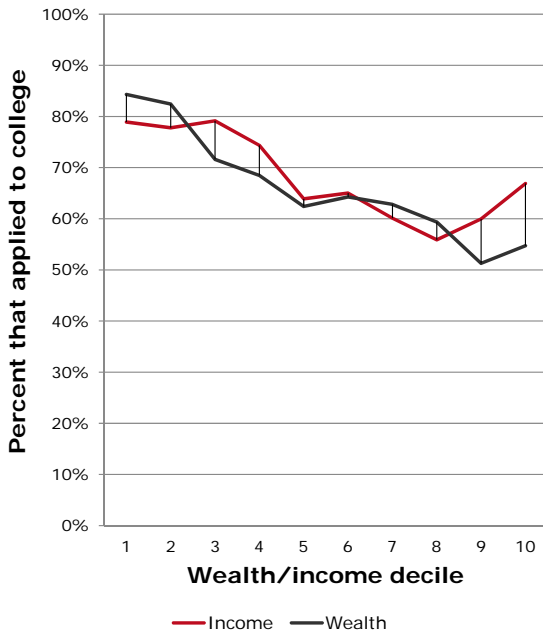


Chart 4. Who attends college

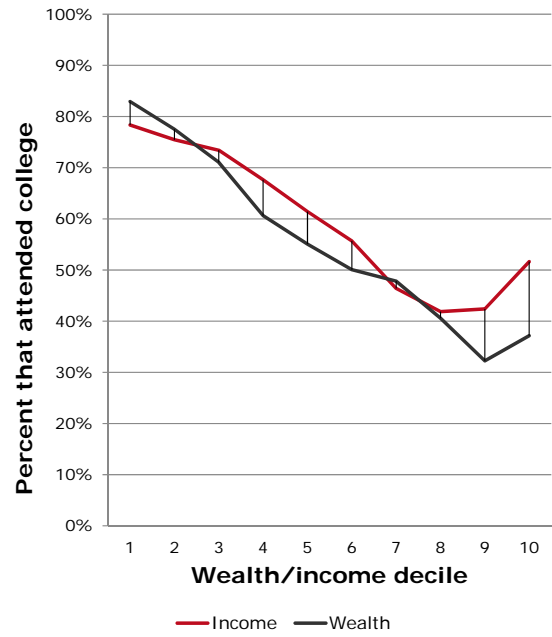


Chart 5. Who attends a 4-year college

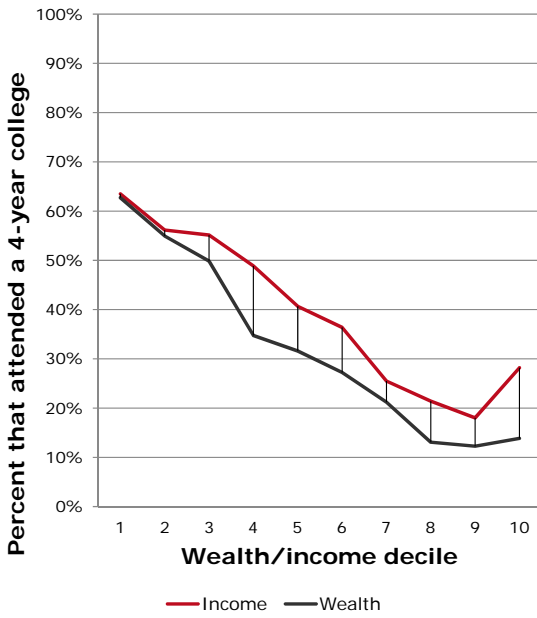
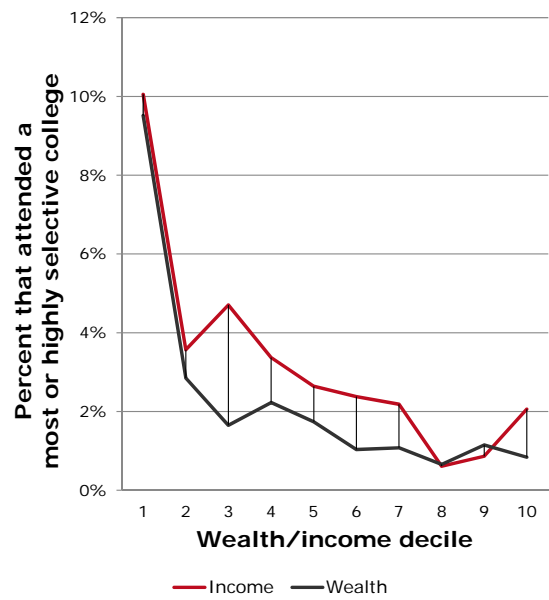
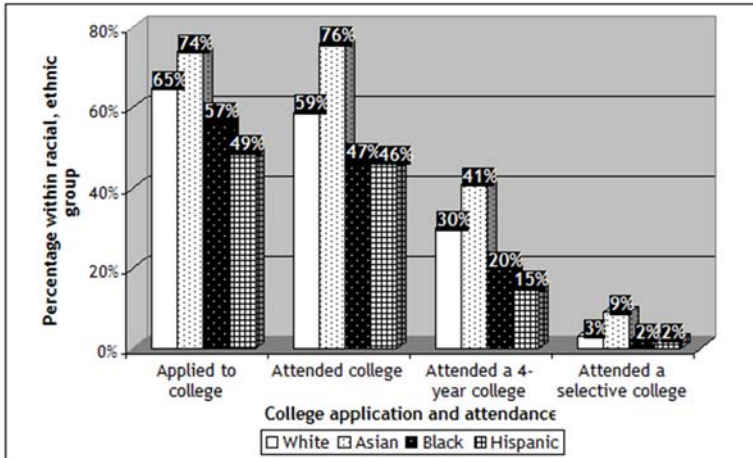


Chart 6. Who attends a most or highly selective college



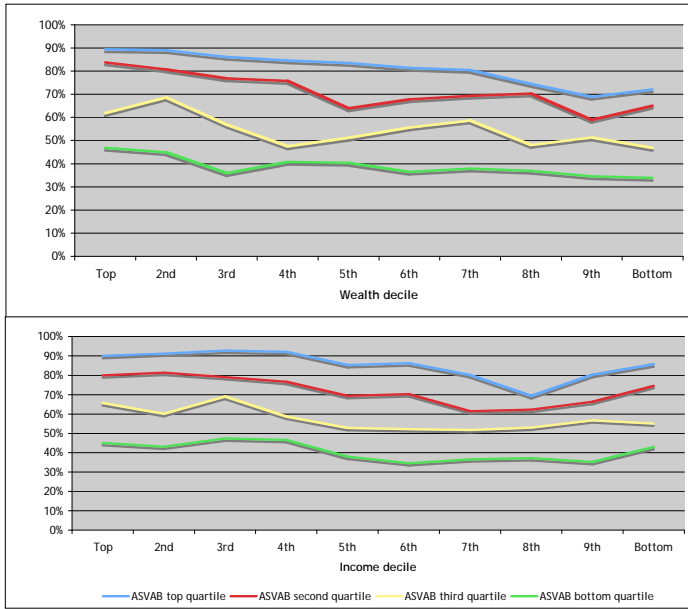
Race, ethnicity, and college access

Chart 7. Racial and ethnic differences in college access



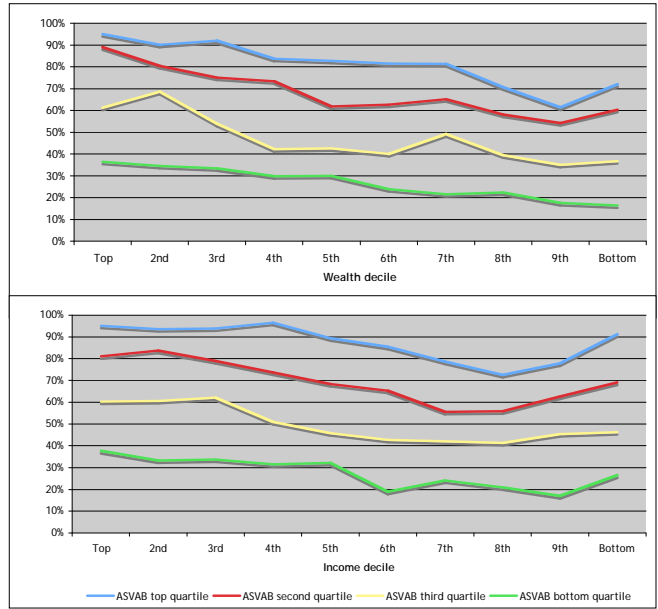
Wealth, income, and academic achievement in college access

Chart 8. College application rates by academic achievement quartile



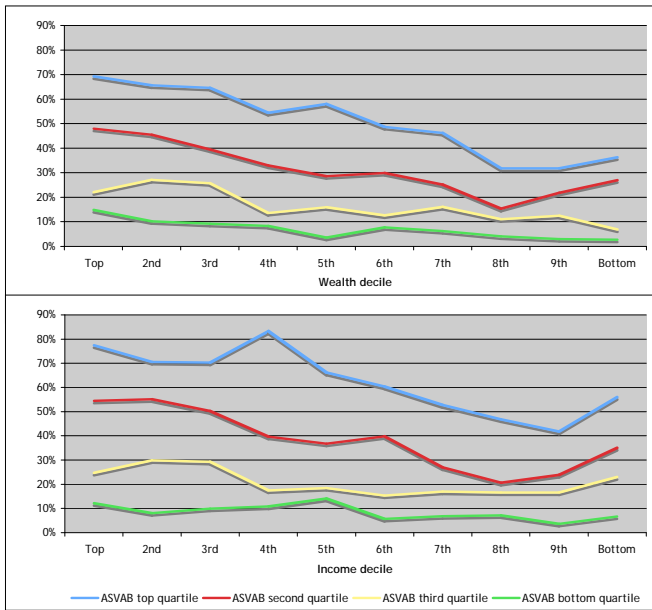
**ASVAB is the measure of academic achievement used*

Chart 9. College attendance rates by academic achievement quartile



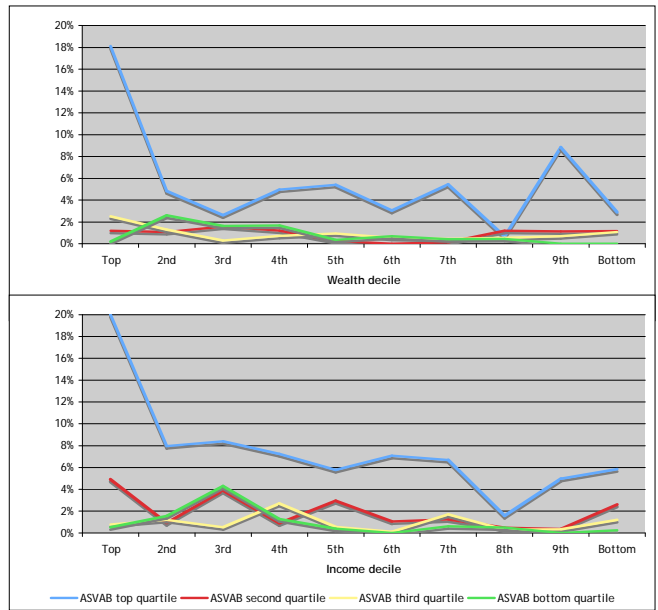
**ASVAB is the measure of academic achievement used*

Chart 10. Four-year college attendance rate by academic achievement quartile



**ASVAB is the measure of academic achievement used*

Chart 11. Selective college attendance rates by academic achievement quartile



**ASVAB is the measure of academic achievement used*